

# U.S. Natural Gas Weekly Storage

	2023-11-17	2023-11-10	Change	Weekly (%)	Last Year	% Change	5yr Avg	% Change.
Lower-48	3,826	3,833	-7	-0.2%	3,564	7.4%	3,558	7.5%
East	918	931	-13	-1.4%	866	6.0%	872	5.3%
SouthCentral	1,240	1,238	2	0.2%	1,200	3.3%	1,158	7.1%
Midwest	1,118	1,116	2	0.2%	1,063	5.2%	1,050	6.4%
MountainWest	255	256	-1	-0.4%	203	25.6%	206	23.8%
Pacific	296	292	4	1.4%	232	27.6%	272	8.7%
Salt	331	332	-1	-0.3%	318	4.1%	315	5.1%
NonSalt	909	906	3	0.3%	882	3.1%	843	7.9%

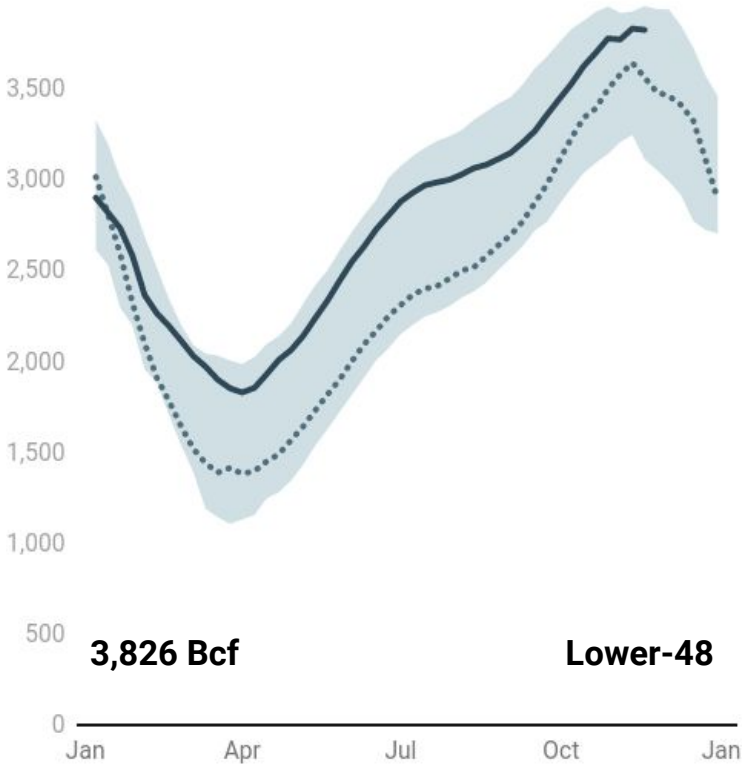
## Weekly Summary

U.S. Lower-48 natural gas inventories came in at 3,826 Bcf, lower by 07 Bcf on the week. Lower-48 gas storage is 7.4% higher than last year and 7.5% higher than the five-year average.

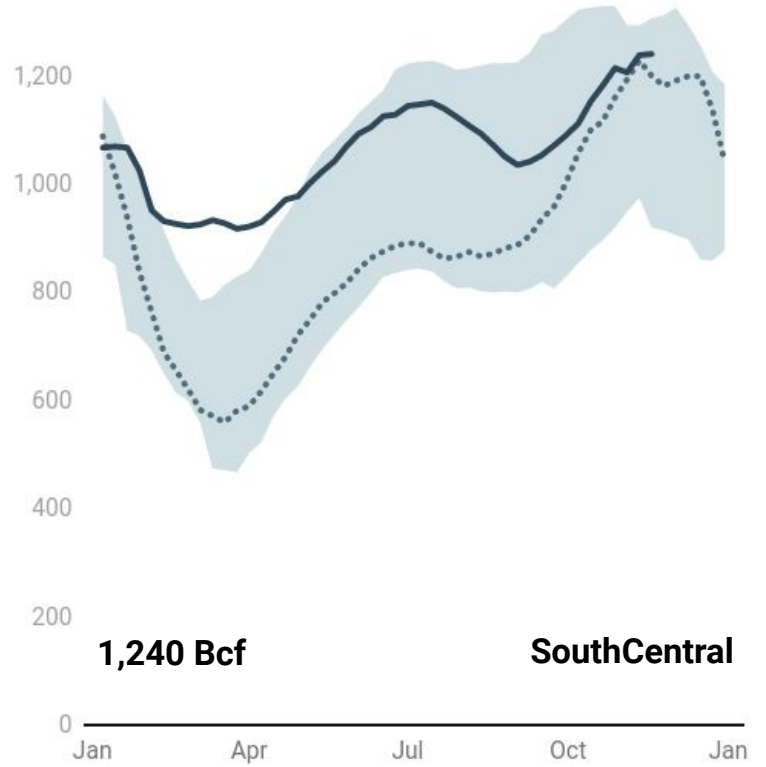
Compared to last year, gas storage in the Pacific Region is 27.6% higher, and 8.7% above the five-year average. Meanwhile, the SouthCentral Region is 3.3% higher than last year, and 7.1% above the five-year average.

Salt storage is 4.1% higher than last year and 5.1% higher than the five-year average. Non-salt gas inventories are 3.1% higher than last year and 7.9% higher than the five-year average.

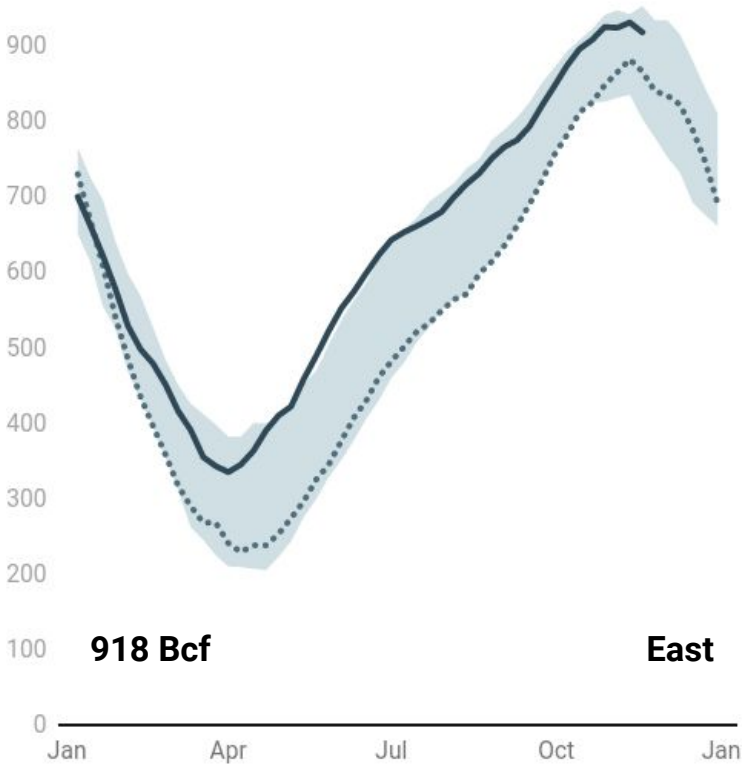
... 2022 — 2023



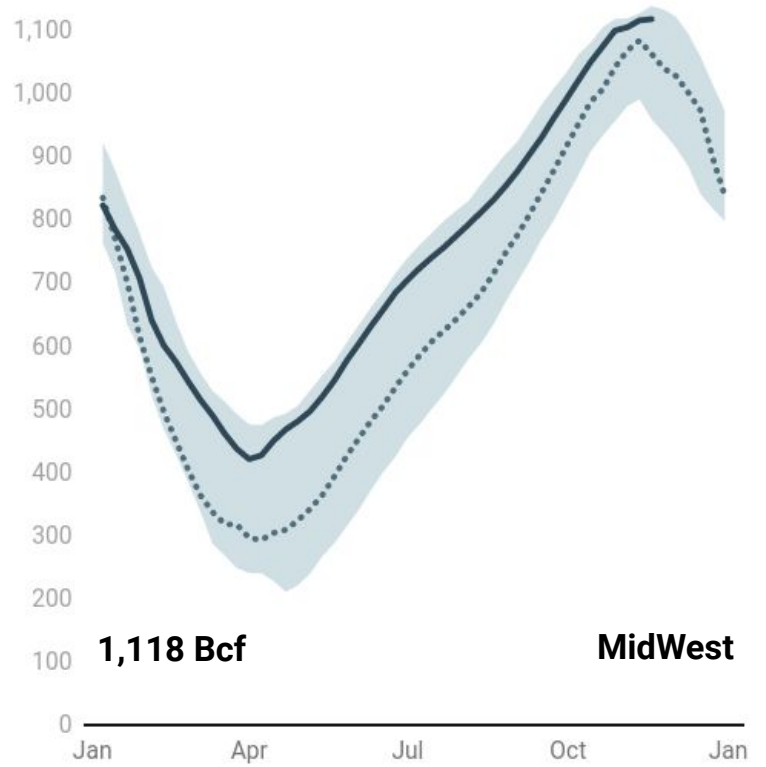
... 2022 — 2023



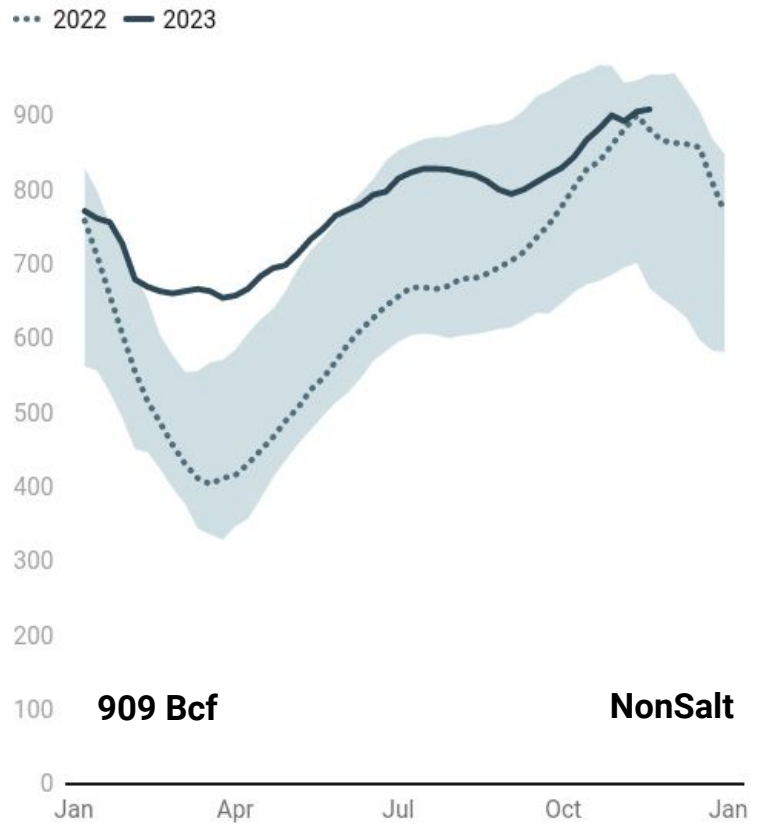
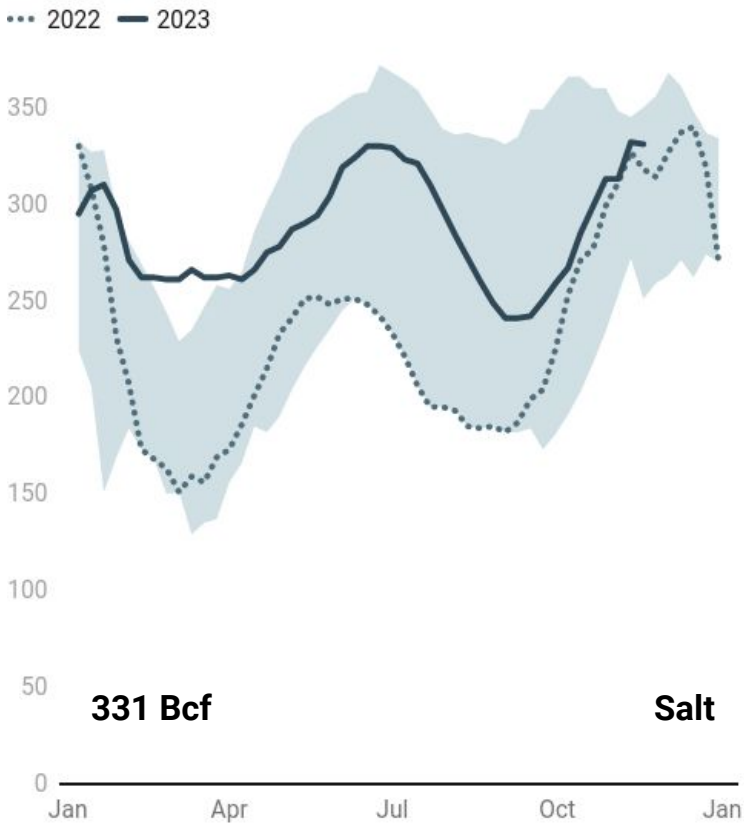
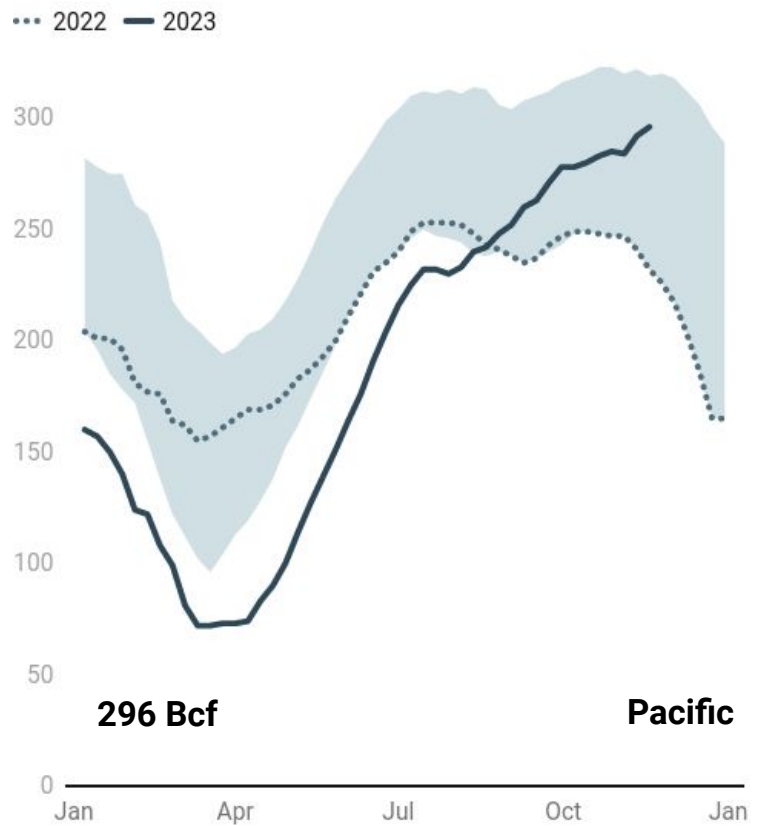
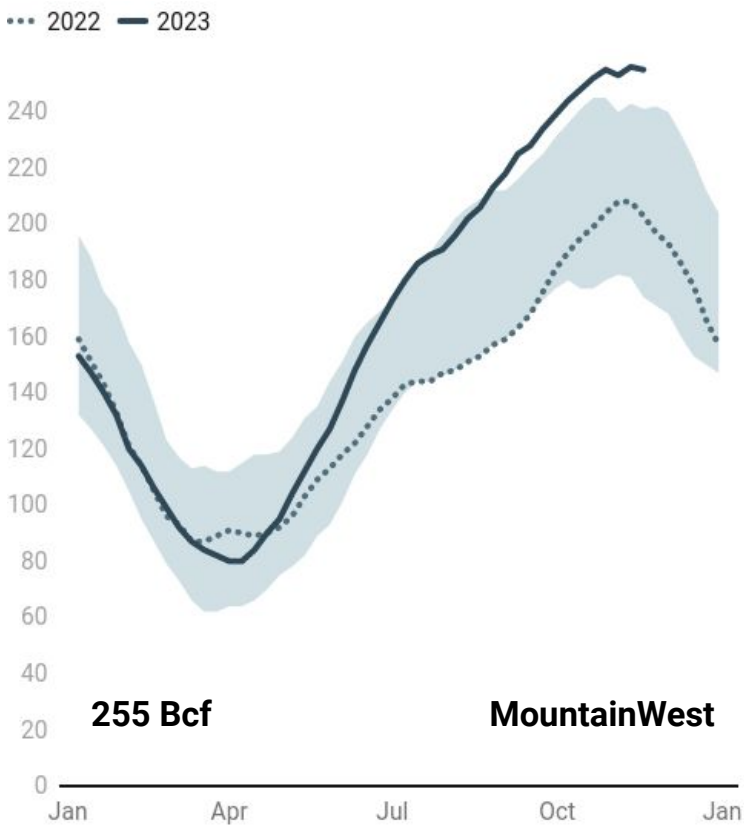
... 2022 — 2023



... 2022 — 2023



# U.S. Natural Gas Weekly Storage

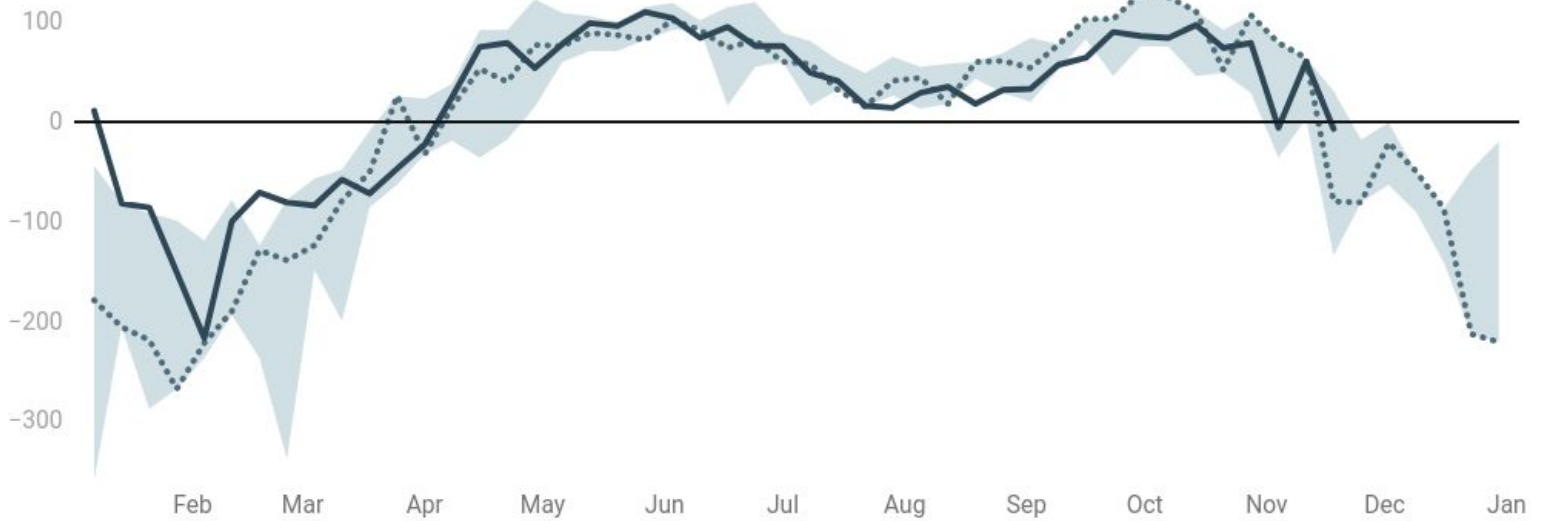


# U.S. Natural Gas Weekly Storage

# U.S. Natural Gas Weekly Storage

## Weekly Injections/(Withdrawals), Bcf

--- 2022 — 2023



Updated: 221123 11:31 CST



Made effortlessly  
with [wrapify](#)